

A woman with long, curly blonde hair is smiling and looking towards the camera. She is wearing a dark blue t-shirt and a colorful beaded bracelet on her right wrist. She is holding a black object, possibly a tool or a part, in her hands. The background is a blurred industrial or warehouse setting with shelves and equipment. The overall image has a warm, orange-toned overlay.

health and  
well-being in the  
workplace

key insights from  
the construction  
industry.



# well-being in construction

## key insights.

805 workers surveyed.



### 17%

of respondents are planning on leaving the profession in the next 12 months due to stress and/or mental health related conditions

### 28%

of respondents have taken time off work due to unmanageable stress or mental health conditions in the last 12 months

### What would help improve well-being?

Free food and drink **75%**

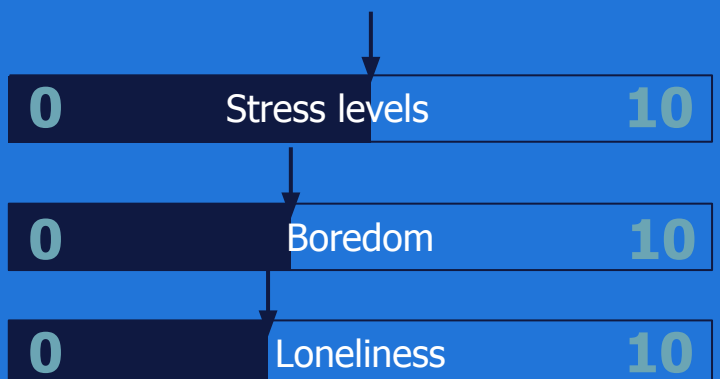
Social areas **71%**

Free counselling **68%**

### Average levels of workplace....



### Average levels of workplace....



# well-being in property key insights.

156 workers surveyed.

## 15%

of respondents are planning on leaving the profession in the next 12 months due to stress and/or mental health related conditions

## 20%

of respondents have taken time off work due to unmanageable stress or mental health conditions in the last 12 months



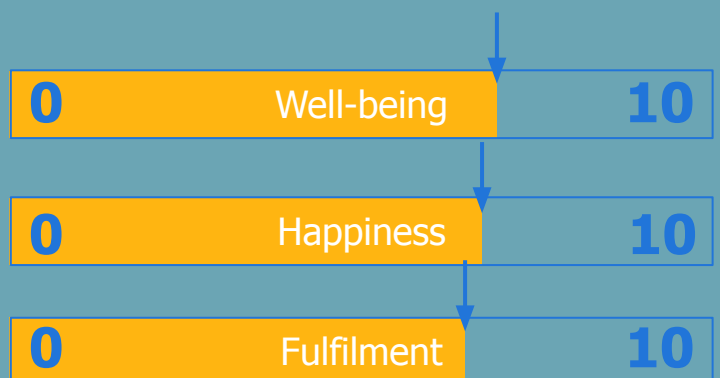
### What would help improve well-being?

Free food and drink **78%**

Training about mental health, resilience and stress management **75%**

Social areas **70%**

### Average levels of workplace....



### Average levels of workplace....



# well-being in manufacturing

## key insights.

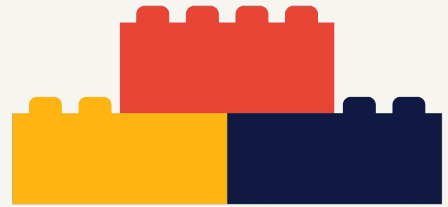
1195 workers surveyed.

### 13%

of respondents are planning on leaving the profession in the next 12 months due to stress and/or mental health related conditions

### 22%

of respondents have taken time off work due to unmanageable stress or mental health conditions in the last 12 months



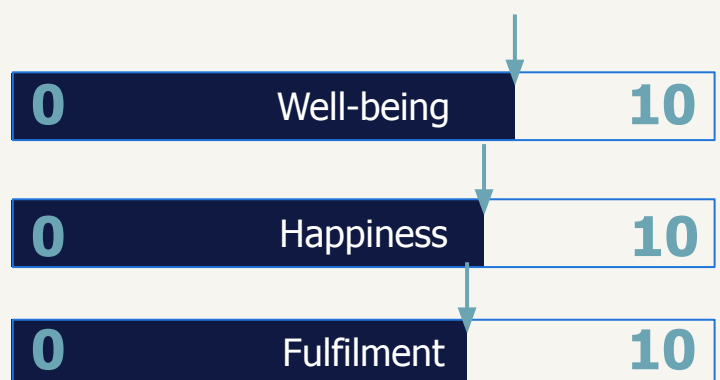
### What would help improve well-being?

Social areas 78%

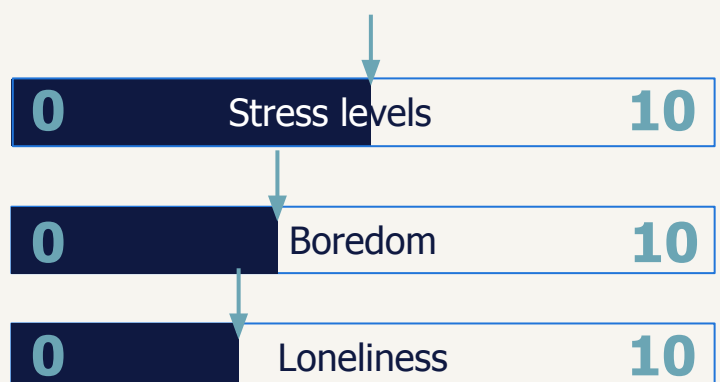
Free food and drink 76%

Training about mental health, resilience and stress management 70%

### Average levels of workplace....



### Average levels of workplace....



# well-being in logistics

## key insights.

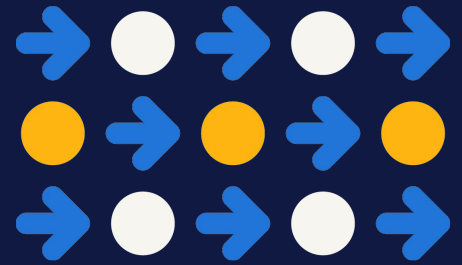
464 workers surveyed.

19%

of respondents are planning on leaving the profession in the next 12 months due to stress and/or mental health related conditions

27%

of respondents have taken time off work due to unmanageable stress or mental health conditions in the last 12 months



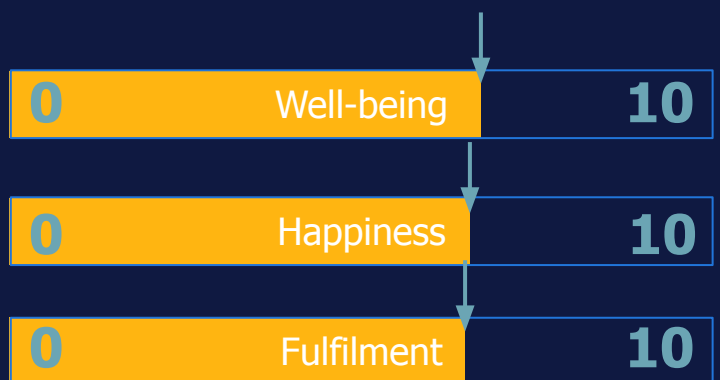
What would help improve well-being?

Social areas 75%

Free food and drink 74%

Free counselling 71%

Average levels of workplace....



Average levels of workplace....



# well-being in rail key insights.

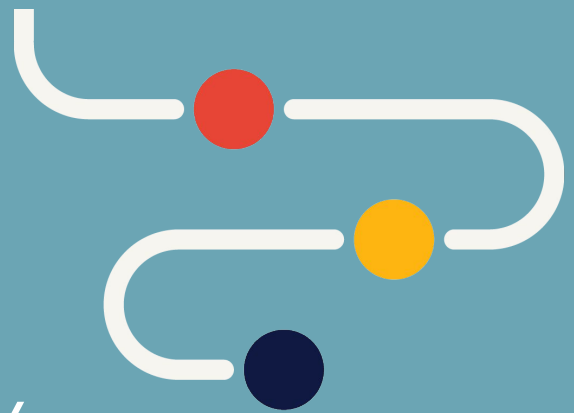
93 workers surveyed.

## 12%

of respondents are planning on leaving the profession in the next 12 months due to stress and/or mental health related conditions

## 18%

of respondents have taken time off work due to unmanageable stress or mental health conditions in the last 12 months



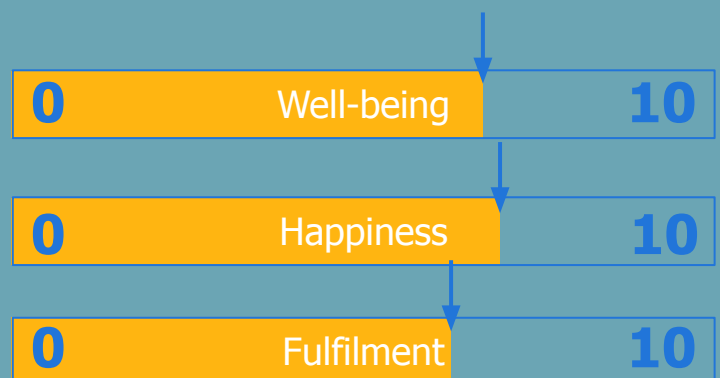
### What would help improve well-being?

Free food and drink 81%

Social areas 77%

Training about mental health, resilience and stress management 64%

### Average levels of workplace....



### Average levels of workplace....



# Contact us:

[randstad.co.uk](http://randstad.co.uk)

search randstad jobs

